

FARM AND ANTIQUE ESTATE AUCTION

Mary Leech Trust • Stapleton, NE

APRIL 21, 2007 • 10:30 AM

Personal Rep., First National Bank Trust Dept.

DIRECTIONS: 1½ MILES NORTH OF STAPLETON, NE, ON HWY. 83, ON WEST SIDE OF ROAD



TRACTORS, FARM MACHINERY, VEHICLES AND MOWER: ALLIS CHALMERS 200 TRACTOR W/CAB, 3,011 HRS., 4 SPEED, 3 PT., WF, #2D-82805; ALLIS CHALMERS DIS TRACTOR W/ ALLIS 415 LOADER, W/DIRT BUCKET AND FORK, 3 PT., WF, 1424 HRS.; INT. SUPER C TRACTOR WF, 2 PT.; MINNEAPOLIS MALINE JET STAR TRACTOR; JOHN DEERE 165 HYDRO 38" CUT RIDING LAWN MOWER W/BAGGER AND MULCHING KIT; 1988 CHEVROLET SILVERADO 1500, 4X4, A/C, AUTO., CRUISE, NEW MOTOR, 40,940 MILES; 1997 OLDSMOBILE EIGHTY EIGHT, 4-DOOR, A/C, TILT, CRUISE, REMOTE KEY ENTRY, 55078 MILES; INT. 2 PT. 7' BAR MOWER, FORD 3 PT. BALE CARRIER; BOSS IRRIGATION SYSTEM W/ NELSON BIG GUN #P200; HORSE-DRAWN 2-ROW RIPPER; TRACTOR WEIGHTS

TOOLS AND SHOP EQUIPMENT: (3) 500 GALLON FUEL BARRELS; SADDLE CYCLE SHARPENER; BATTERY-POWERED POST HOLE DIGGER; ANVIL; MILLER WELDER MODEL M180; CRANK-TYPE DRILL PRESS; BELT GRINDER; MID STATES AIR COMPRESSOR; (2) PUMP JACKS; 250 GALLON PROPANE TANK; PLUS LOTS OF MISC. HAND TOOLS, ELECTRIC HAND TOOLS, SHOVELS, RAKES, HOES, FORKS

HOUSEHOLD FURNITURE AND ANTIQUE FURNITURE: CUSHMAN COLONIAL TABLE W/ (2) DROP-DOWN LEAVES, (2) CAPTAIN CHAIRS AND (4) CHAIRS; BUFFET, DARK WOOD SIDEBORD TABLE; PADDED ROCKING CHAIR; KIMBALL PIANO AND BENCH; WOODEN ROCKER GLIDER; WOODEN ROCKING CHAIR; ROUND OAK TABLE (4) PEDESTAL W/ (4) LEAVES AND (10) OAK CHAIRS; 2-DOOR CHINA HUTCH; WARDROBE; PEDESTAL ROUND TABLE W/DRAWER; DESK TOP DRESSER; GLASS CHINA HUTCH; FULL-SIZE PEDESTAL BED W/MIRRORED DRESSER; END TABLES; LEATHER RECLINER, FLOWERED LOVE SEAT; COFFEE TABLES; FLOOR LAMP; WOODEN GLASS-TOP END TABLE; 3-PIECE FULL-SIZE BEDROOM SET; 2-PIECE FULL-SIZE BEDROOM SET; FULL-SIZE BED W/ HEADBOARD & DRESSER W/ MIRROR; LANE CEDAR CHEST; WOODEN ROCKING BABY CRIB; (2) WOODEN HIGH CHAIRS; ANTIQUE DRESSER W/ MIRROR; MIRRORED TABLE; COAT RACK

APPLIANCES: MAYTAG REFRIGERATOR, 14.9 CUBIC FOOT; GIBSON PORTABLE DISHWASHER; CALORIC GAS STOVE; SHARP CAROUSEL MICROWAVE; ANTIQUE OAK REFRIGERATOR; AMANA CHEST-TYPE DEEP FREEZER; MAYTAG WASHER-DRYER COMBO, STACKED; SKEL GAS RANGE; WHIRLPOOL APARTMENT-SIZE REFRIGERATOR; RCA DIMENSIA COLOR TV AND STAND; THOMAS EDISON CRANK PHONOGRAPH W/81 CONES

GUNS AND SADDLES: REMINGTON 20 GAUGE PUMP; WINCHESTER 44 WCF LEVER ACTION; MARLIN 12 GAUGE PUMP; MARLIN MODEL 80 22 CALIBER W/ SCOPE; CIRCLE H ANTIQUE SADDLE IN MINT CONDITION; BONI ALLEN SADDLE; HARPAN SADDLE FROM LINCOLN, NE; STAN BROWN SADDLE; MISC. HARNESS AND TACK

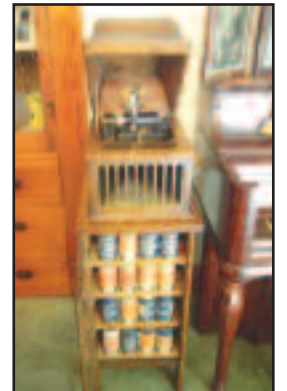
MISC.: DELAVAL 18 CREAM SEPARATOR; HORSE HAME MIRROR; CREAM CANS W/ LIDS; DAISY 1 GALLON BUTTER CHURN; (2) HURRICANE LAMPS; CHAMPION PEDAL CAR; (10) SAD IRONS; WOOD-BURNING COOK STOVE; CRANK TELEPHONE; ICE TONGS; MEAT CHOPPER; LARD PRESS; LANTERN; VACCINE GUNS AND EAR TAGGERS; DOILIES AND LINENS; DOLLS AND DOLL CLOTHES; MINK SHAWL; GLOBE; CAMEL-TOP TRUNK; (3) PLASTER OF PARIS STATIONS OF THE CROSS

ANTIQUÉ DISHES AND GLASSWARE: IMPERIAL CHINA FULL SET OF 12; POPPY TRAIL 10-PIECE SETTING; FIESTA BOWLS AND CUPS; SILVER TEA SET; FRANCISCAN PLACE SET; MISC. CHINA; LIPTON TEA POT; HULL FLOWERED PICTURE; MAN-OF-WAR CANISTER; HALL POT; PLUS A LOT OF POTS AND PANS AND KITCHEN UTENSILS, ELECTRIC APPLIANCES AND MUCH, MUCH MORE

JEWELRY: SOLITAIRE DIAMOND RING; ENGAGEMENT RING

AUCTIONEER'S NOTE: THIS IS AN AUCTION OF VERY CLEAN ONE-OF-A-KIND ITEMS THAT HAVE BEEN VERY WELL TAKEN CARE OF, WITH LOTS OF NICE ANTIQUE FURNITURE. PLEASE MARK YOUR CALENDARS FOR THIS ONE, APRIL 21!

LUNCH SERVED BY CIRCLE V CATERING



Let White Do It Right

WHITE AUCTION SERVICE

JEFF WHITE

441 South Hershey Dickens Rd. • Hershey, NE 69143

308-368-5280 or 308-530-1307

www.whiteauctionservice.com